

MALDON TOWN REGATTA SAILING INSTRUCTIONS

Saturday 21st September 2024

High Water Maldon 15:19 / Low Water Mersea 08:35

All communication will be via VHF Channel 77 All times are in BST

Welcome to the Maldon Town Regatta. Early start time for the racing this year, again with a lunch break at Osea Island.

There are two races open to all yachts, smacks, bawleys and other classes (West Solent's, ECODs, MFOB and BJRC.) but not to dinghies, winkle brigs, etc. which are catered for separately in the event program.

Race 1 is from the Nass Beacon at West Mersea to Osea Pier

Race 2 is a Parade of Sail from Osea Pier to Maldon. There is an option on the entry form for those who prefer take part in the Parade of Sail only.

There are 10 Classes. Classes 1 to 6 will sail a long course and Classes 8,9 and 10 a shorter course in order that they will stand more chance of arriving at Osea in time to participate in the Parade of Sail.

Class 7 ECOD will sail their own course starting at Osea Island and will compete in the Parade of Sail as normal

All classes will race under their handicap system.

Racing will be governed by the rules as defined in Racing Rules of Sailing (RRS) 2021-2024 OGA prescriptions and Local Area Instructions. These Sailing instructions include the attached safety instructions.

Yachts/Smacks Longer course

Smacks and Bawleys: Class 1a Fast smacks, Class 1b Not so fast smacks

Class 1c Slightly less fast smacks, Class 2 Bawleys

Class 3 Gaff Rigged Yachts

Class 4 Classic Wooden Yachts

Class 5 Modern Yachts

Class 6 West Solent One Design

East Coast One Design

Class 7 ECODs

Small Yachts and MFOB may sail a shorter course depending on weather

Class 8 Small Gaff Rigged Cruising Yachts

Class 9 Small Other Cruising Yachts

Class 10 MFOB

Dinghies and small open boats. Please apply to your class captain at Maldon Yacht Club for more information

All vessels shall be governed by the racing rules from the five-minute signal for their class, all mechanical propulsion should be switched off before the 5 minute signal, any vessel with their engine running after the 5 minute signal will be disqualified.

Starting Procedure: - The Race Office will be open on Ch77 from 07:30. Please alert the OOD of any changes to your race entry form, particularly number of persons on board.

There will be a race briefing at 07:40 on Ch77.

Please avoid calling the OOD during the starting sequence.

All boats are obliged to clearly identify themselves to the committee boat at both the start and end of the race using the race numbers issued or fishing numbers in the case of Smacks, Bawleys and MFOB's

The Committee Boat, Thames Sailing Barge Wyvenhoe, will display, before the first 10-minute signal (gun or fog horn blast), a board facing the start line indicating class numbers and courses in the following sample format.

Classes	1 & 2	3 - 7	8,9 & 10
Course	Letter	Letter	Letter

In addition to the above, the courses will be announced via VHF Ch. 77 before the first 10-minute gun.

10 Minute, 5 Minute, 1 minute and Start Signals will be by sound signals.

A vessel will be deemed to have crossed the line when any part of the vessel including spars, bowsprit or rudder have crossed the line

If a boat or boats are over the line at the start a single sound signal (horn) will be made immediately after the starting signal. And the vessels will be informed over VHF 77

There will be no recall for vessels to recross the start line, but a nominal 10-minute time penalty will be given at the discretion of the OOD. Participating vessels may contact the committee boat on VHF Ch 77 but NOT during the period between the first 10-minute gun and the last start gun.

Start Line: - Between the mast of the Committee boat, Thames Sailing Barge Wyvenhoe, and the Nass Beacon. There may be a yellow inner limit buoy adjacent to the committee boat.

DO NOT SAIL BETWEEN THIS MARK AND THE COMMITTEE BOAT

Start Times: -

Class 1c and 2 - Slightly less fast smacks and bawleys	08:00
Class 1b Not so fast smacks: -	08:15
Class 1a Fast smacks: -	08:30
Classes 3, 4, 5, and 6	08:40
Classes 8, 9 and 10 possibly a shorter course	08:50

Class 7 ECOD will have their own start for the first race at Osea Island contact Ian Wilson for details

All times shown are BST

Time limit: -

The time limit for these races will be 1300. Craft finishing after this time will not be timed in but may record their own time and report it once ashore. Please proceed to Osea under power in time for the start of the Parade of Sail.

Finish Line:- A line between the main mast of the Committee Boat and the light on Osea Pier. There may be a yellow inner limit buoy adjacent to the committee boat and Osea Pier. Do not pass between the buoy and the committee boat.

After finishing the race, please anchor or “heave to” well away from the finishing line but in view of the committee boat.

Please see the separate course card (see page 5 and the back page of the programme) listing the possible courses.

We hope that the wide range of courses will allow for each wind direction and strength of wind.

A chart showing the approximate positions of the race marks is attached.

Tenders. Must be under 16 ft

There will be a motorboat ‘Puncher’ in the vicinity of the committee boat prior to the start of the race which will tow tenders upriver. Ian Hiner will be listening Ch77, Tel.07850637631.

Prior to dropping your tender off with Ian.

Secure all items in the boat.

Ensure a strong painter of at least 6m long.

Ensure fendering on ‘heavy’ boats.

Please transfer your tender in good time prior to the start of the race. The committee boat will not tow any tenders upriver. While every effort is made to ensure safe towing. We can accept no responsibility for damage or loss of dinghies being towed.

Shortening Course

Please maintain a listening watch on Ch 77 in case the OOD decides to shorten the course or issue safety instructions etc.

In addition to radio communication the committee boat will be supported by one or more support boats tasked to make direct contact where possible.

Protests: -

Protestor shall hail "PROTEST and the name of the vessel under protest" and display a red flag in the starboard shrouds until she finishes or retires. Notify the OOD and protested as soon as possible, and in writing to the MTRA Race Office on the Sailing Barge Wyvenhoe immediately on coming ashore after the race and in any event not later than 15:30 hrs on Regatta day. Protests require a deposit of £25 payable to MTRA which is returnable unless the protest is deemed frivolous. No protest will be considered unless presented in the correct format before 15:30 hrs.

Race 2:- The Parade of Sail. Osea Pier to Maldon.

This race will be started by the OOD on the committee boat.

This is a non- handicap race. (First across the line in class wins!)

All classes will sail the same course.

10 Minute, 5 Minute and Start Signals will be by gun and flag signals.

THE CLASS 1 & 2 (Smacks & Bawleys) START SIGNAL WILL BE THE 10 MINUTE SIGNAL FOR THE REMAINING CLASSES. This will be followed by the 5 minute and Start Signals as above. Any boats over the line at the start will be bounced down 3 places in the finishing order.

Start Time:- This will depend on wind strength and direction, but approximately 13:30 for Smacks and 13:40 for all other vessels. 1 minute before the first 10-minute gun the Committee Boat will sound a long blast on the foghorn. Immediately afterwards the OOD will make an announcement on VHF Ch. 77.

Start Line:- Same as Finish Line for Race 1. A line between the mast of the Committee Boat and the light on Osea Pier.

Course:- Start Westerly — Hillypool Point (buoy 8) to port — Finish.

Finish Line:- Finish at Maldon YC line. (meets on the clubhouse in line with a diamond on the salting opposite).

After Crossing the Finish Line, please carry on up to the quay, under sail if possible, for the benefit of spectators.

Berthing:- There is limited berthing available on the Hythe (soft mud). Competing boats may wish to contact the local boatyards to pre-book a berth, contact details; Downs Road Boatyard 07885 859373, Landbreach Boatyard 07836715685, Marinestore Maldon Boatyard 01621854280. The Sail Lofts 01621 853885 If you do not wish to stay in Maldon, PLEASE DO NOT impede the Finish Line.

Crew party:- There will be a crew party starting at 1500hrs at the Queens Head Public House and the Maldon Little Ship Club, music throughout the evening. Special Priced Regatta Beers and Cocktails.

Prize giving:- Will be at the rear of the Queens head at approximately 18:30.

Food:- Meals will be available in the Queens Head, with discounted fish and chips for all entrants, at any time in the evening. There will also be food and drinks available at the Maldon Little Ship Club
There will also be food

The Regatta Committee hope you have an enjoyable day's sailing and Crew party

Safety

- 1) The acceptance of an entry will in no way mean that MTRA will be liable for any loss, damage, death or personal injury howsoever caused to the owner, skipper or any member of the crew, as a result of taking part in these races. All vessels will be entirely responsible for their own safety and should be attentive to the safety of those around them nothing in these instructions or elsewhere reduces this responsibility.
- 2) IT IS A CONDITION OF ENTRY THAT ALL BOATS SHALL CARRY ADEQUATE THIRD-PARTY INSURANCE.
- 3) The safety of a vessel and her crew shall be the sole responsibility of the owner or owner's representative. (Skipper) It is recommended that all crew wear a lifejacket or buoyancy aid.
- 4) The Skipper shall ensure that the Boat is fully found, and the crew are sufficient in numbers and experience to face the conditions that may arise during the race.
- 5) The Skipper shall ensure the soundness of the hull, spars, rigging and equipment
- 6) It is the sole responsibility of each Skipper to decide whether or not to start or having started to continue the race and the Skipper shall advise her/his crew of these safety instructions.
- 7) The OOD will have a record of the number of persons on board as declared in your Entry Form. If the number on board is different inform the OOD [See Starting Procedure on P2 and 3]. The purpose of this is so that in the unlikely event of an accident where the skipper or crew are unable to communicate directly with the emergency services the OOD can pass on this information.
- 8) The carrying and use of VHF radio is mandatory for information and safety in these races. The race information channel is Ch77.
- 9) All vessels shall sail with appropriate safety equipment for the vessel and its area of operation all equipment is to be serviceable and in date
- 10) All vessels shall carry an anchor and chain/warp of a suitable size for their vessel with an appropriate safe and efficient means of recovery.

Maldon Town Regatta 1st Race Course Card

Alternative courses may be added on the day by VHF 77

Course	Wind direction	Distances Nm	Direction of start	Course
A	SW	11.3	W	3p 2p 1p THs
B	SW	15	W	3p 10p 6p THs
C	SW	16.8	W	3p BHp 6p THs
D	W	9.6	W	14p 5p 1s 2s THs
E	W	13.4	W	14p 5p 6s 10s THs
F	W	14.6	W	14p 5p 6s BH THs
G	NW	11.5	W	12p 5p 2p THs
H	NW	8.5	W	3p 12p 5p 3p THs
I	NW	15	W	3p 10p 6p 18p 2s 1p THs
J	N	9.8	E	1s 17s MGp 12s 3p THs
K	N	14	E	1s 10p 6p 2s 1p 12s 3p THs
L	N	16.6	E	1s BHp 6p 2s 1p 12s 3p THs
M	NE	9.5	E	1s 2s 12s 3p THs
N	NE	15.8	E	6s 17s 1p 12s 14p THs
O	NE	16.4	E	6s 10s 17s 1p 12s 14p THs
P	E	8.3	E	1s 2s 3p THs
Q	E	12	E	6s 10s 3p THs
R	E	13.6	E	6s 10s 3p 5s THs
S	SE	8.6	E	1s 2s 14p 5s THs
T	SE	12.4	E	1s 10s 14p 5s THs
U	SE	13.4	E	1s BHs 14p 5s THs
V	S	8.6	E	1s 2s 3p 12s THs
W	S	12.4	E	6s 10s 3p 12s THs
X	S	13.4	E	6s 10s 1p 2s 3p 12s THs
Y	Extreme conditions	5.9	W	THs
Z	Extreme conditions	7.5	E	1s THs
1	Extreme conditions			3p 12s THs
2	Extreme conditions			12s 3p THs

Legend. THs: Thirslet Spit Buoy BH: Bench Head Buoy MG: Middle Ground Buoy

WMYC & Dabchics racing Marks

No	Name	Flag Colour	Position (Approximate)
1	Quest Motor Group	Black	51-45.83N 00-56.24E
2	Micro Scooters	Black	51-45.21N 00-56.62E
3	Tollesbury Saltings	Black	51-45.13N 00-52.90E
5	Paynes Turf	Black	51-44.92N 00-53.93E
6	Fiducia Wealth	Black	51-45.74N 00-58.96E
10	Ellisons Solicitors	Black	51-44.82N 00-59.41E
12	William Hackett Chains	Black	51-45.47N 00-53.00E
14	Push Energy	Black	51-45.45N 00-53.91E
17	Miller Motor Group	Black	51-45.21N 00-55.11E
18	Waldegraves	Black	51-45.60N 00-57.62E
MG	John Munns/ Geoff Hunt	Black	51-45.61N 00-55.45E
OLM (S)	Dabchicks sailing club	Black	51-45.58N 00-54.75E
OLM (E)	Space Workplace Ltd	Red	51-45.68N 00-55.020E
OLM (W)	Whittle & Co	Green	51-45.70N 00-54.43E
Committee	EYE Marine	None	51-45.78N 00-54.60E

WMYC and DSC Racing Marks

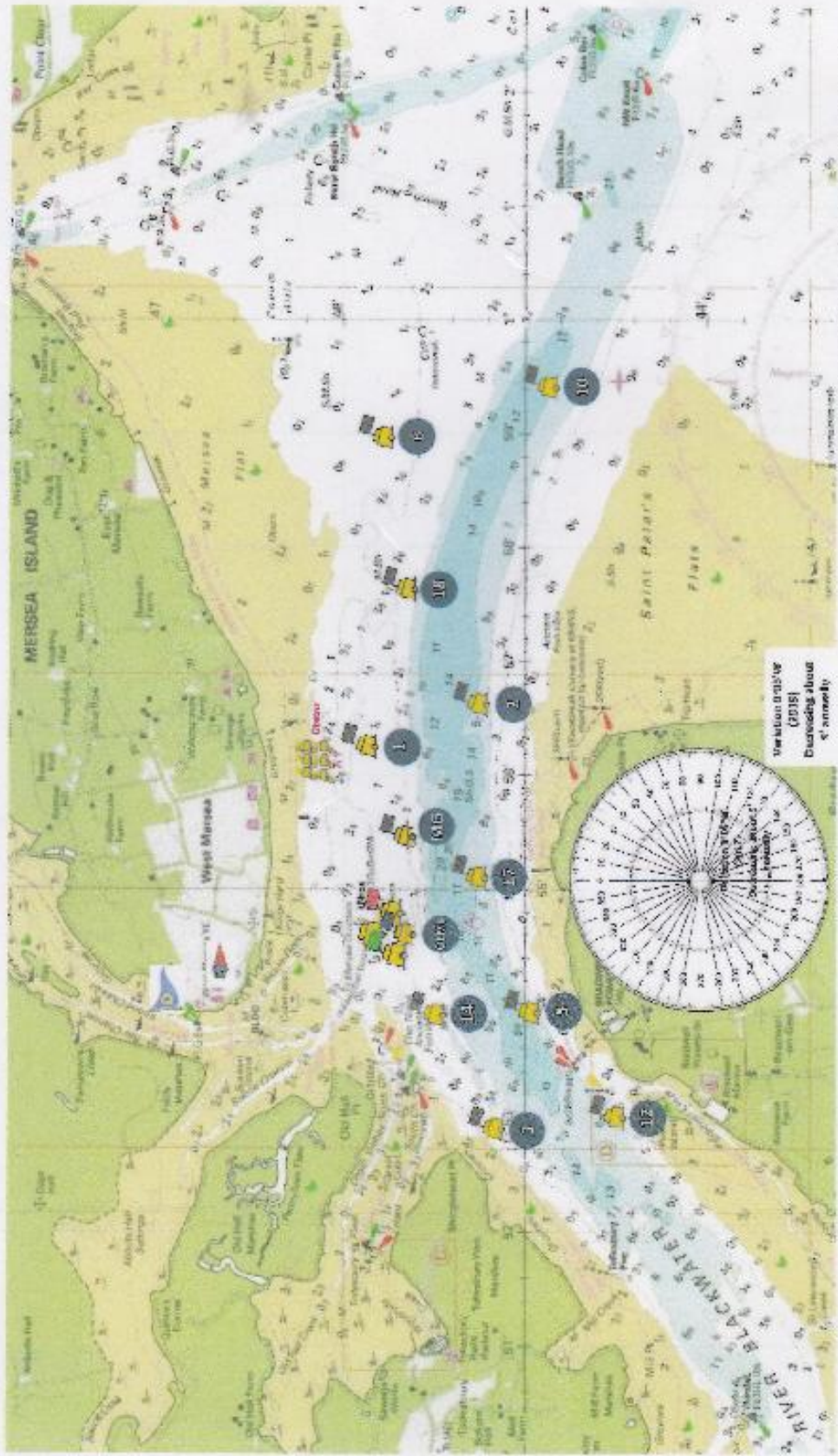


Chart no longer copyright and with the courtesy of Imray